

PREFEITURA MUNICIPAL DE SERTÃOIS

**APROVADO**

Em 28 ABR 2015

Responsavel

ACID	PIS	BIT	QUANT	COMPRIMENTO	UNIT	TOTAL
				(m)	(m)	(m)
PTP	1	1	1	100	100	100
PTP	2	1	1	100	100	100
PTP	3	1	1	100	100	100
PTP	4	1	1	100	100	100
PTP	5	1	1	100	100	100
PTP	6	1	1	100	100	100
PTP	7	1	1	100	100	100
PTP	8	1	1	100	100	100
PTP	9	1	1	100	100	100
PTP	10	1	1	100	100	100
PTP	11	1	1	100	100	100
PTP	12	1	1	100	100	100
PTP	13	1	1	100	100	100
PTP	14	1	1	100	100	100
PTP	15	1	1	100	100	100
PTP	16	1	1	100	100	100
PTP	17	1	1	100	100	100
PTP	18	1	1	100	100	100
PTP	19	1	1	100	100	100
PTP	20	1	1	100	100	100
PTP	21	1	1	100	100	100
PTP	22	1	1	100	100	100
PTP	23	1	1	100	100	100
PTP	24	1	1	100	100	100
PTP	25	1	1	100	100	100
PTP	26	1	1	100	100	100
PTP	27	1	1	100	100	100
PTP	28	1	1	100	100	100
PTP	29	1	1	100	100	100
PTP	30	1	1	100	100	100
PTP	31	1	1	100	100	100
PTP	32	1	1	100	100	100
PTP	33	1	1	100	100	100
PTP	34	1	1	100	100	100
PTP	35	1	1	100	100	100
PTP	36	1	1	100	100	100
PTP	37	1	1	100	100	100
PTP	38	1	1	100	100	100
PTP	39	1	1	100	100	100
PTP	40	1	1	100	100	100
PTP	41	1	1	100	100	100
PTP	42	1	1	100	100	100
PTP	43	1	1	100	100	100
PTP	44	1	1	100	100	100
PTP	45	1	1	100	100	100
PTP	46	1	1	100	100	100
PTP	47	1	1	100	100	100
PTP	48	1	1	100	100	100
PTP	49	1	1	100	100	100
PTP	50	1	1	100	100	100
PTP	51	1	1	100	100	100
PTP	52	1	1	100	100	100
PTP	53	1	1	100	100	100
PTP	54	1	1	100	100	100
PTP	55	1	1	100	100	100
PTP	56	1	1	100	100	100
PTP	57	1	1	100	100	100
PTP	58	1	1	100	100	100
PTP	59	1	1	100	100	100
PTP	60	1	1	100	100	100
PTP	61	1	1	100	100	100
PTP	62	1	1	100	100	100
PTP	63	1	1	100	100	100
PTP	64	1	1	100	100	100
PTP	65	1	1	100	100	100
PTP	66	1	1	100	100	100
PTP	67	1	1	100	100	100
PTP	68	1	1	100	100	100
PTP	69	1	1	100	100	100
PTP	70	1	1	100	100	100
PTP	71	1	1	100	100	100
PTP	72	1	1	100	100	100
PTP	73	1	1	100	100	100
PTP	74	1	1	100	100	100
PTP	75	1	1	100	100	100
PTP	76	1	1	100	100	100
PTP	77	1	1	100	100	100
PTP	78	1	1	100	100	100
PTP	79	1	1	100	100	100
PTP	80	1	1	100	100	100
PTP	81	1	1	100	100	100
PTP	82	1	1	100	100	100
PTP	83	1	1	100	100	100
PTP	84	1	1	100	100	100
PTP	85	1	1	100	100	100
PTP	86	1	1	100	100	100
PTP	87	1	1	100	100	100
PTP	88	1	1	100	100	100
PTP	89	1	1	100	100	100
PTP	90	1	1	100	100	100
PTP	91	1	1	100	100	100
PTP	92	1	1	100	100	100
PTP	93	1	1	100	100	100
PTP	94	1	1	100	100	100
PTP	95	1	1	100	100	100
PTP	96	1	1	100	100	100
PTP	97	1	1	100	100	100
PTP	98	1	1	100	100	100
PTP	99	1	1	100	100	100
PTP	100	1	1	100	100	100

NOTA: CONCRETO fck = 20 MPa

BRASIL  
 GOVERNO FEDERAL  
 FUNDO NACIONAL DE DESENVOLVIMENTO DA EDUCAÇÃO  
 FINEDE  
 PAIS RICO É PAIS SEM POBREZA

MUNICIPIO - UF:  
 PROPRIETARIO:  
 ENDEREÇO:

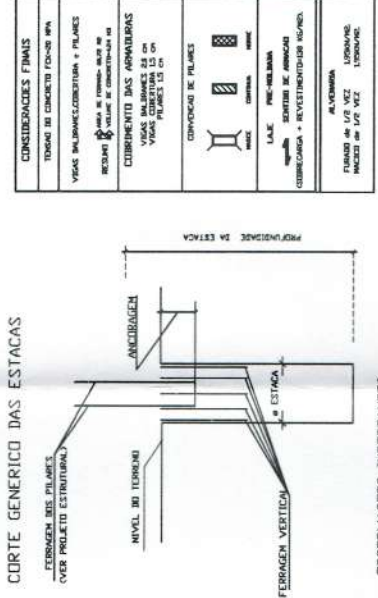
PROPRIETARIO  
 RESP. TÉCNICO  
 Eng. ISMAEL TAVARES RICHIA - CREA-GO 1823/D  
 AUTOR DO PROJETO

DUFO  
 CREA  
 RA

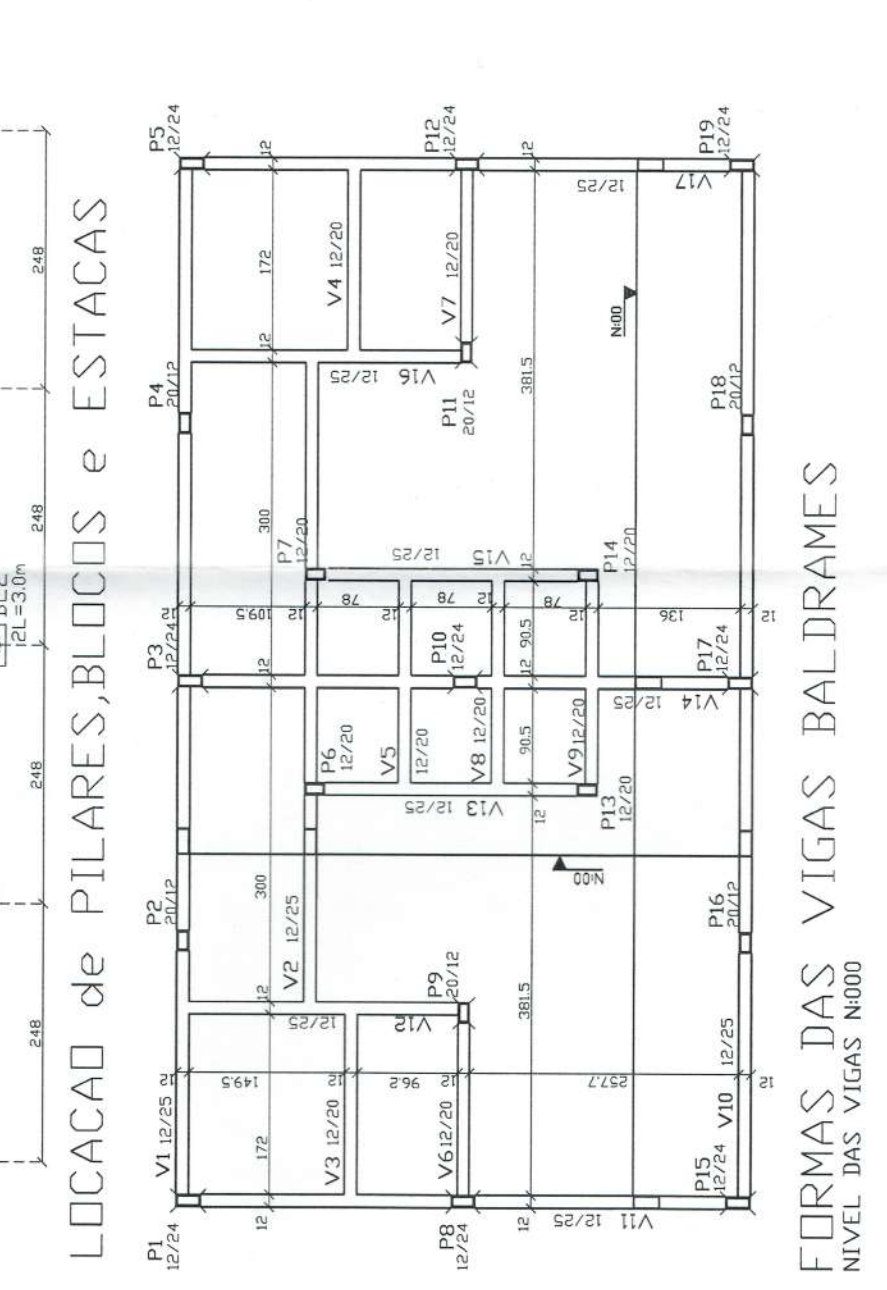
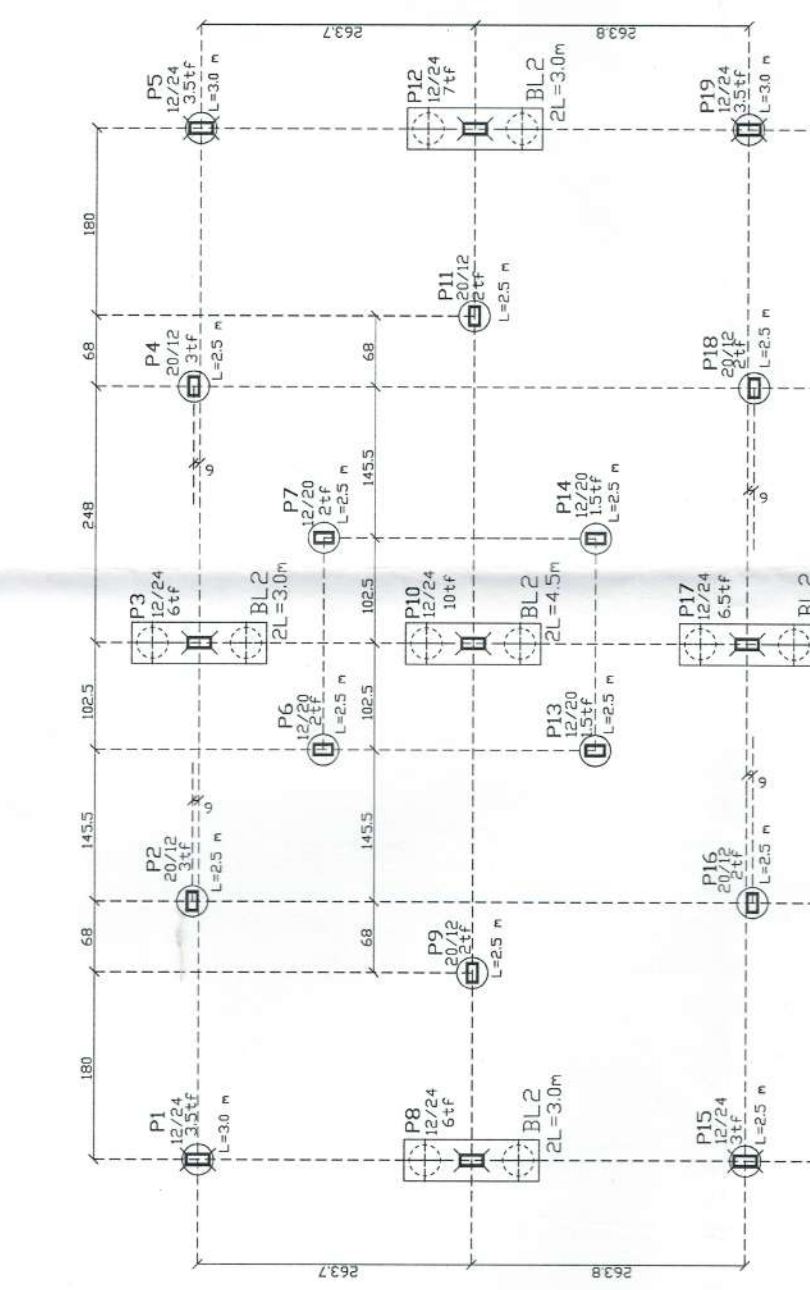
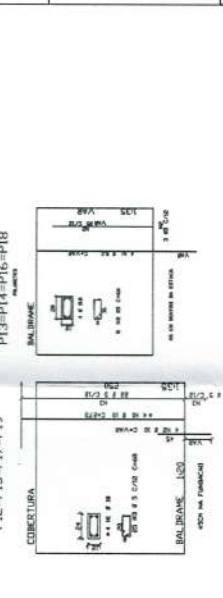
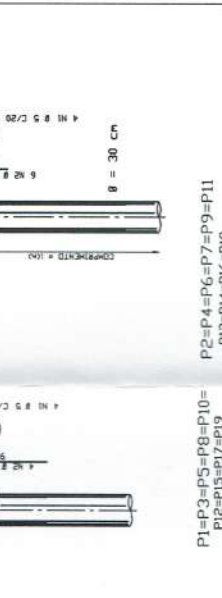
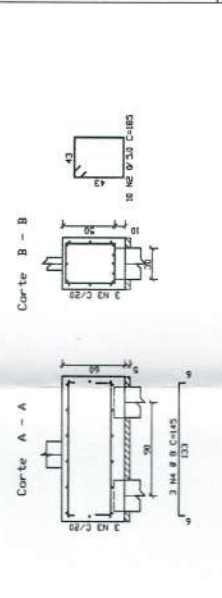
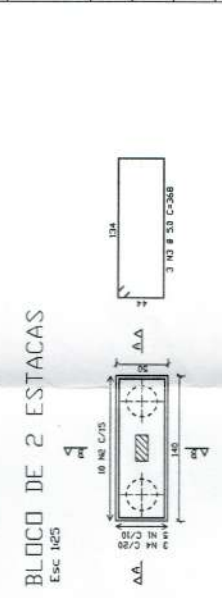
OBSERVAÇÕES:

ESCOLA 12 SALAS DE AULA  
 PROJETO ESTRUTURAL concreto armado

CGEST - C  
 Gerál de Infraestrutura Educacional  
 ESCALA 1/50 ou indicada  
 R.01 - NOVEMBRO DE 2005  
 R.02 - JULHO DE 2011  
 JULHO / 2011  
 PRANCHA 31/34



CONSIDERAÇÕES FINAIS  
 TUDO DE CONCRETO FORMADO  
 VIGAS BALDRAMES E PLANTAS  
 REFORÇADAS COM ARMADURA  
 COMBUSTÍVEL DAS ANOMALIAS  
 VIGAS BALDRAMES E PLANTAS  
 CONDIÇÃO DE PLANTAS  
 LAJE PERIMETRAL  
 CIMENTAÇÃO + REVESTIMENTO RIGIDO  
 ALVENARIA  
 REFORÇADA COM ARMADURA  
 REFORÇADA COM ARMADURA



LOCACAO DE PILARES, BLOCOS e ESTACAS

FORMAS DAS VIGAS BALDRAMES  
 NIVEL DAS VIGAS N1000