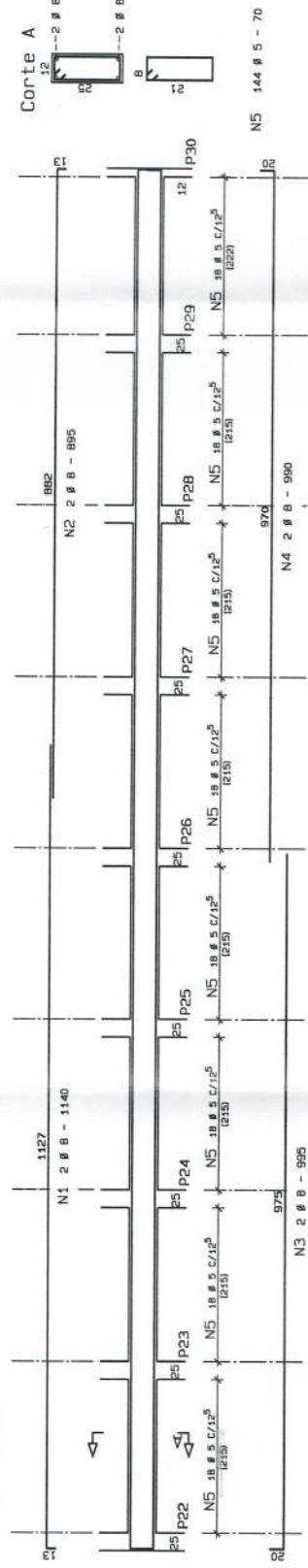
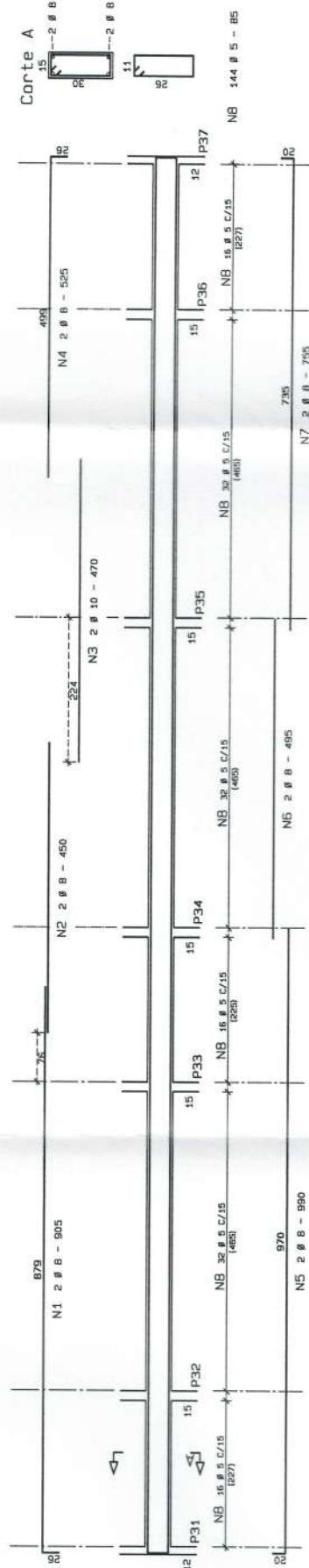


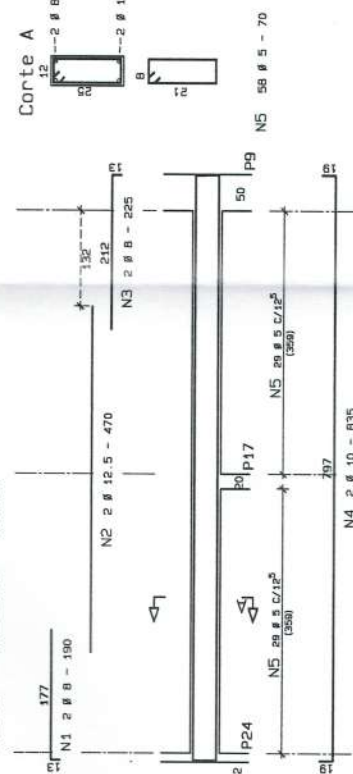
VB5 12/25



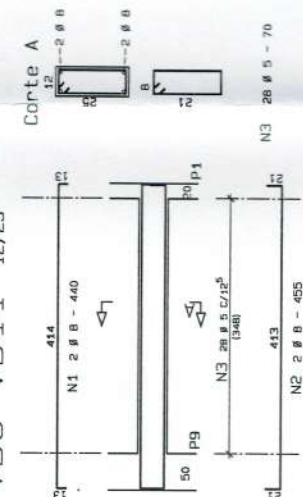
VB6 15/30



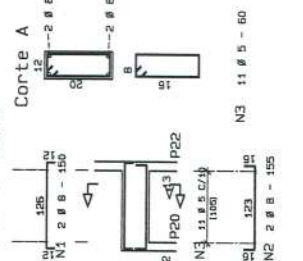
VB8=VB10 12/25



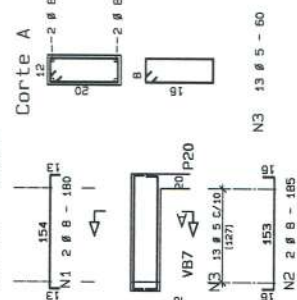
VB9=VB11 12/25



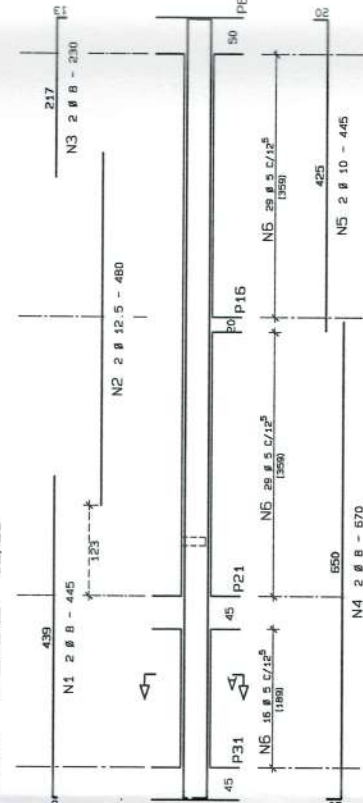
VB4 12/20



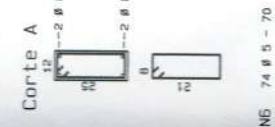
VB3 12/20



VB7=VB12 12/25



Corte A



**APPROVADO**

PREFEITURA MUNICIPAL DE SERTÃOZERS

Em 20/08/2015

Responsável

ACO	POS	BIT	QUANT	COMPRIMENTO	UNIT	TOTAL
		(mm)		(cm)	(cm)	(cm)
VB3	50A	1	8	2	180	360
	50A	2	8	2	185	370
	60B	3	5	13	60	780
VB4	50A	1	8	2	150	300
	50A	2	8	2	155	310
	60B	3	5	11	60	650
VB5	50A	1	8	2	140	280
	50A	2	8	2	95	190
	50A	3	8	2	990	1980
VB6	50A	1	8	2	144	288
	50A	2	8	2	144	288
	60B	3	5	14	70	10080
VB7=VB12	50A	1	8	2	144	288
	50A	2	8	2	144	288
	60B	3	5	14	70	10080
VB8=VB10	50A	1	8	2	144	288
	50A	2	8	2	144	288
	60B	3	5	14	70	10080
VB9=VB11	50A	1	8	2	144	288
	50A	2	8	2	144	288
	60B	3	5	14	70	10080

RESUMO ACO CA 50-60			
ACO	BIT	COMPR	PESO
	(mm)	(m)	(kg)
50A	8	282	113
50A	10	61	38
50A	12.5	38	38
50A	15	462	189
Peso Total			440
50A =			440
60B =			74
			180

Volume de concreto de vigas (m³) 2.9 2.7  
 Taxa de armadura (kg/m³) 90.3 97.8

NOTA: CONCRETO fck = 20 MPa

BRASIL  
 Ministério da Educação  
**FNDE**  
 Fundo Nacional de Desenvolvimento da Educação

PROJETO PADRÃO - FNDE

MUNICÍPIO - UF:  
 PROPRIETÁRIO:  
 ENDEREÇO:  
 PROPRIETÁRIO:  
 RESP. TÉCNICO: CREA  
 Eng. ISMAEL TAVARES RICHIA - CREA-CE 1023/D  
 AUTOR DO PROJETO

DIFERENÇA

CREA

RA

OBSERVAÇÕES:

ESCOLA 12 SALAS DE AULA

PROJETO ESTRUTURAL concreto armado  
 BLOCO C: LABORATÓRIOS  
 ARMAÇÃO DE VIGAS BALDRAMES

EST  
 14/34