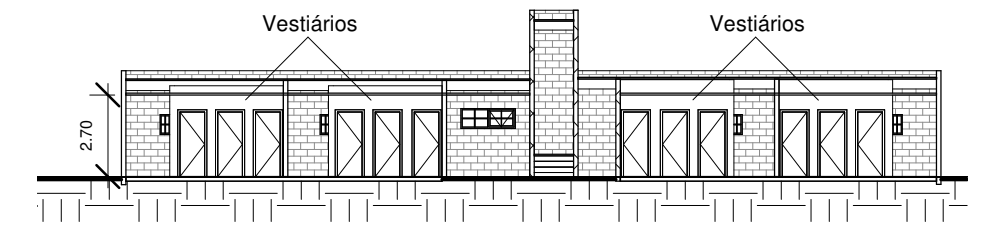
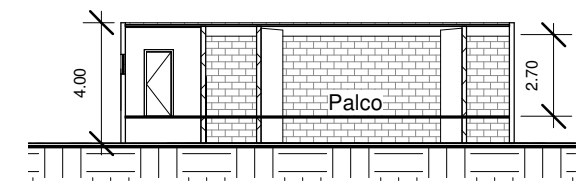


1 Planta de cobertura
1 : 250

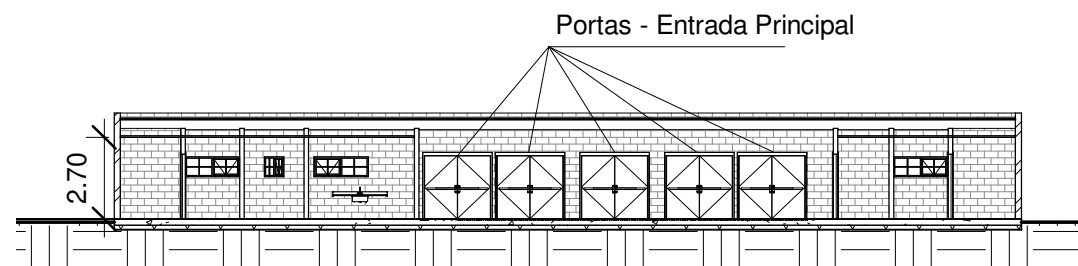


3 Corte Prédio B
1 : 250



4 Corte Prédio C
1 : 250

LEGENDA	
	Calhas a serem instaladas
	Algerosas a serem instaladas



2 Corte Prédio A
1 : 250

PREFEITURA MUNICIPAL DE SERTÃO - RS Av. Getúlio Vargas, 563 - Centro - CEP 99170-000		
Projeto: Reforma do Ginásio Pedro Piovesan - Parte 2		
Prancha: Cortes - Arquitetônico		Data: 22/04/19
Prefeito: Edson Luiz Rossatto		Prancha: ARQ 04
Resp. Técnico: Gabriel Rodighero CREA RS233097		