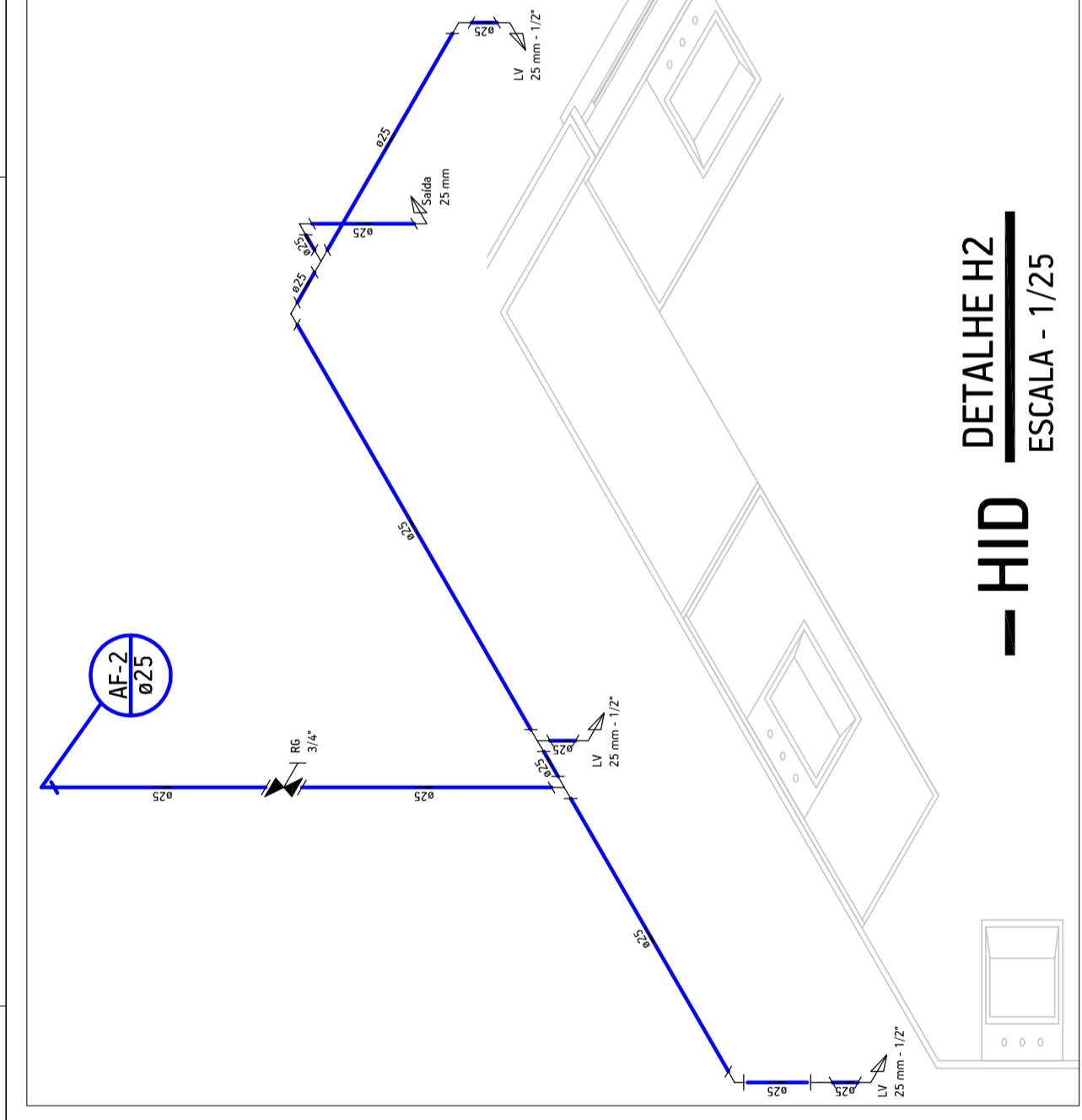
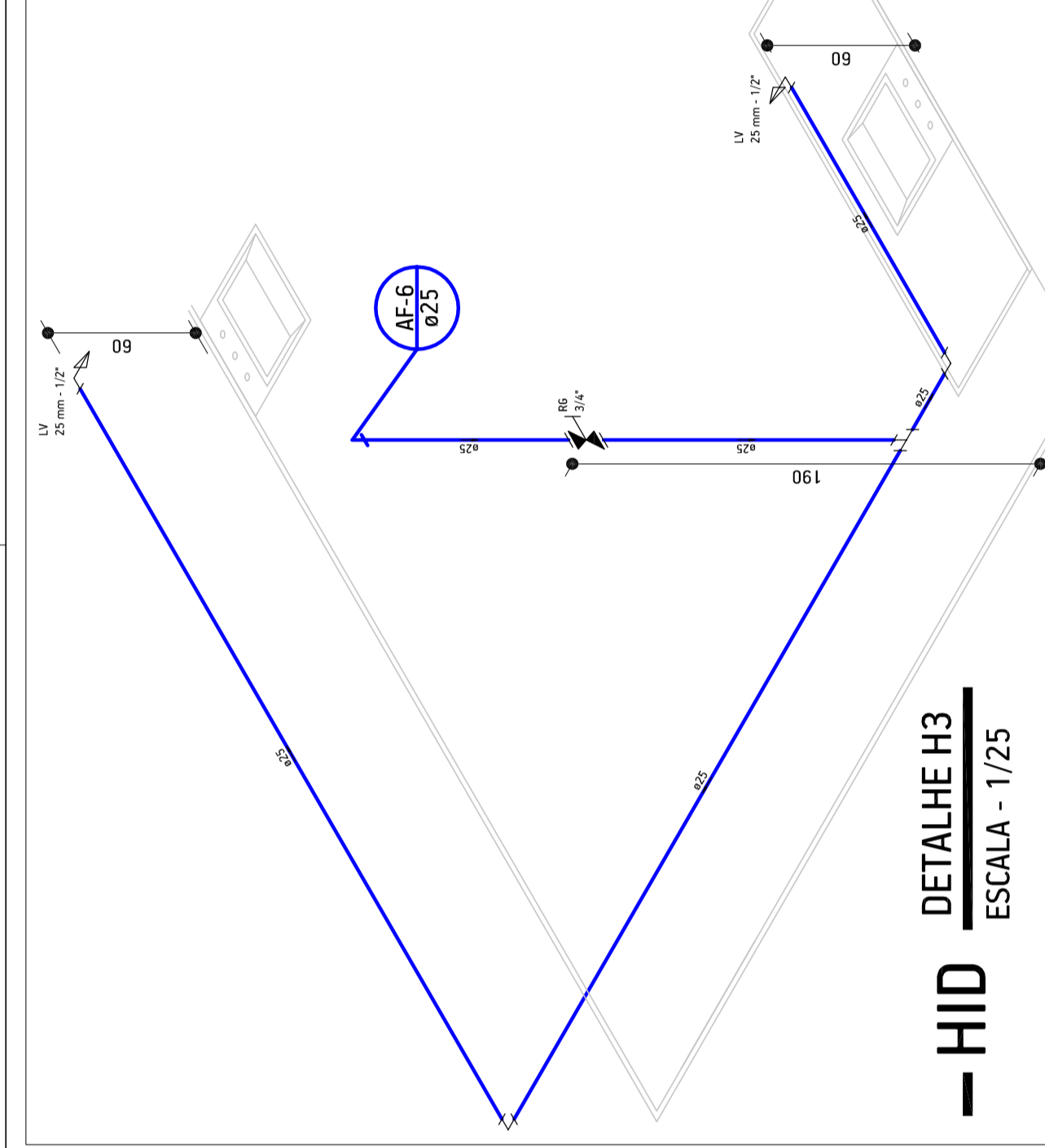


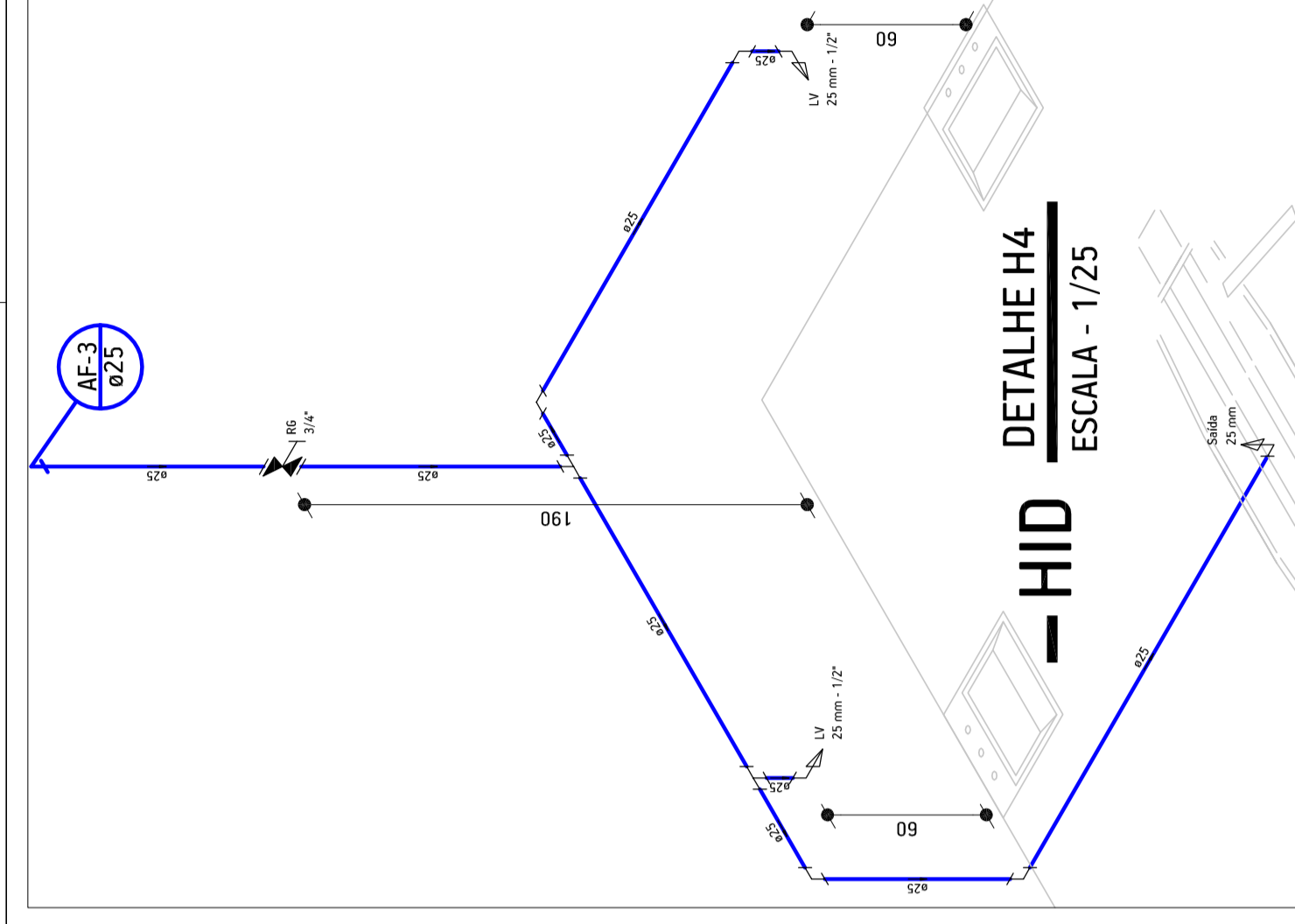
**— HID** **DETALHE H1**  
ESCALA - 1/25



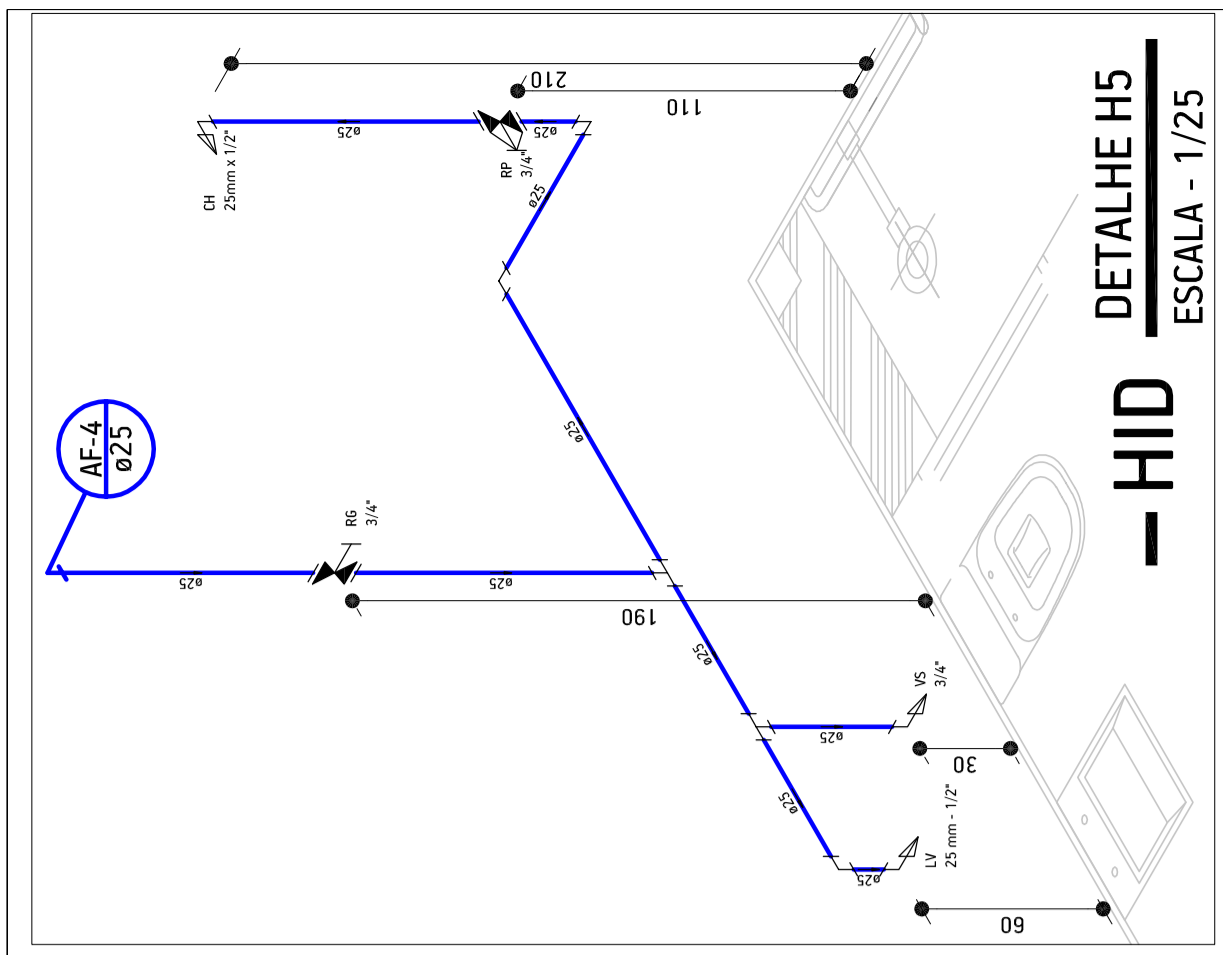
**— HID** **DETALHE H2**  
ESCALA - 1/25



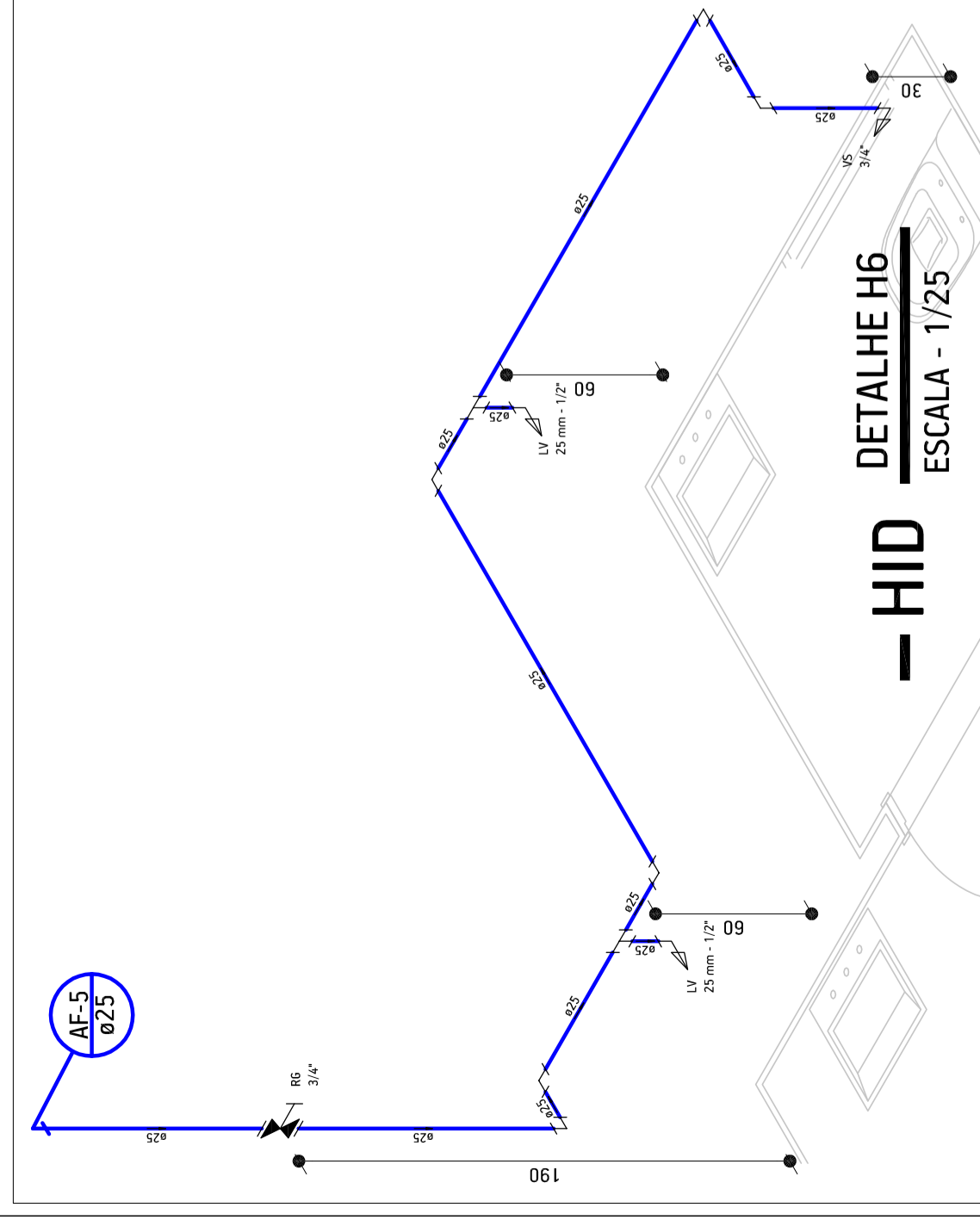
**— HID** **DETALHE H3**  
ESCALA - 1/25



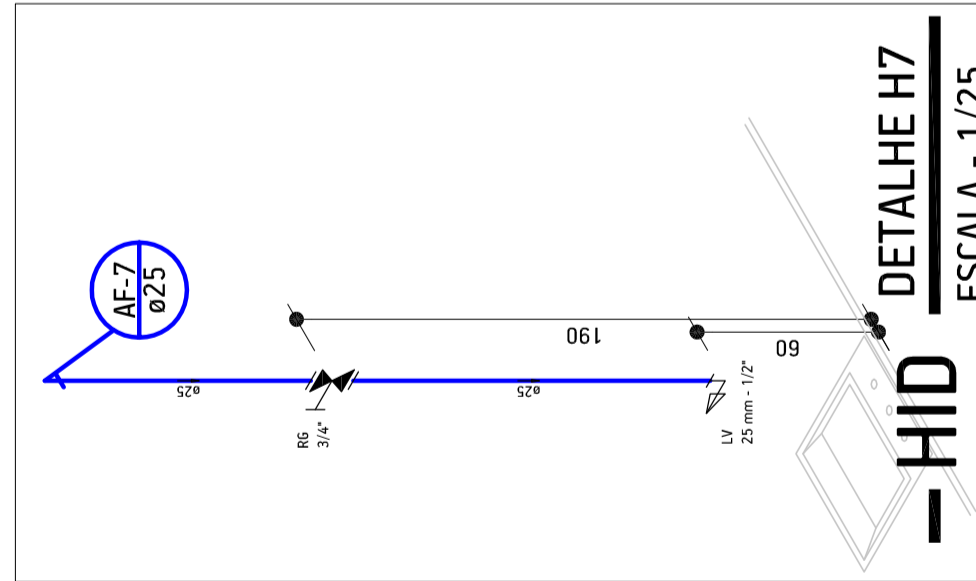
**— HID** **DETALHE H4**  
ESCALA - 1/25



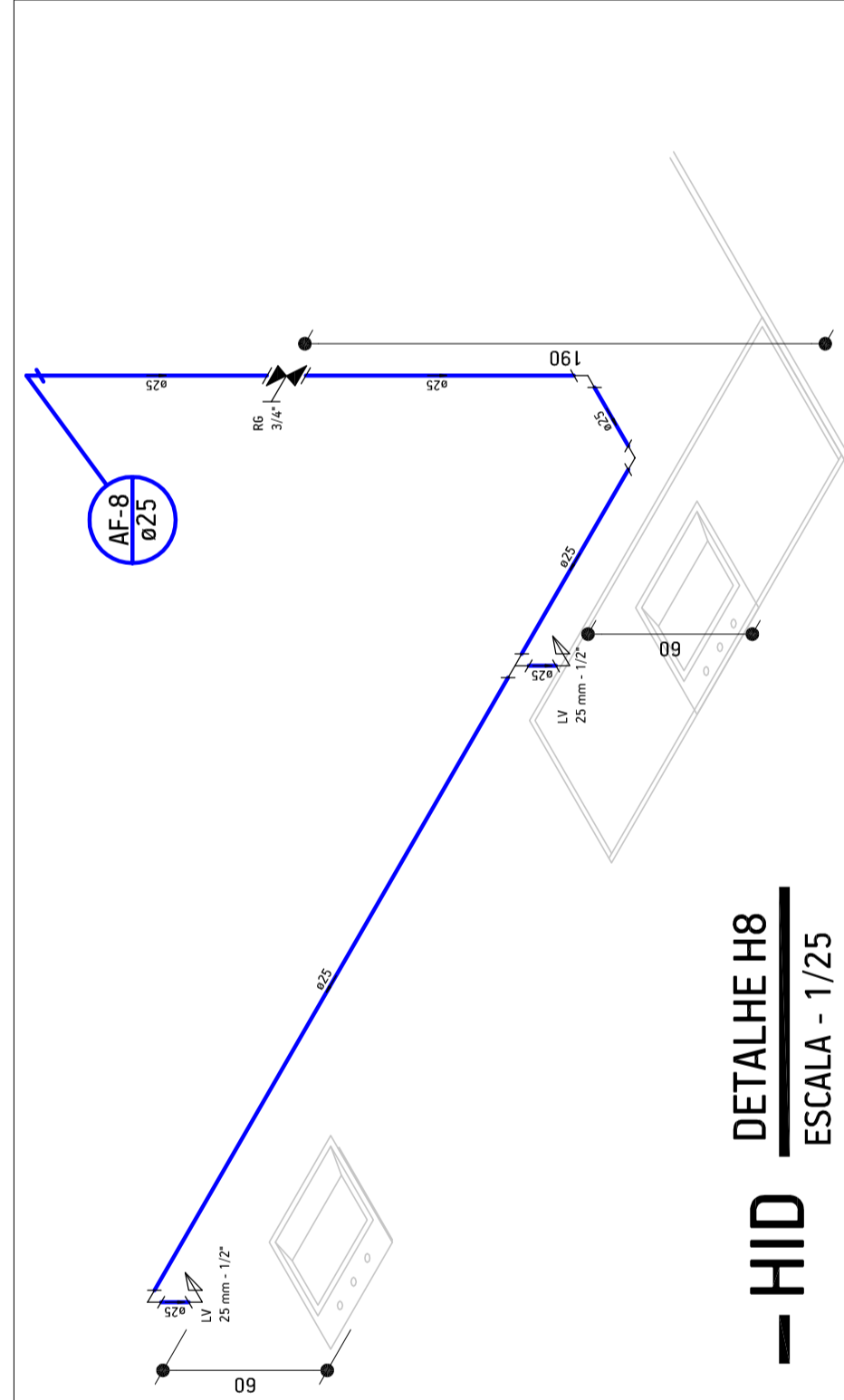
**— HID** **DETALHE H5**  
ESCALA - 1/25



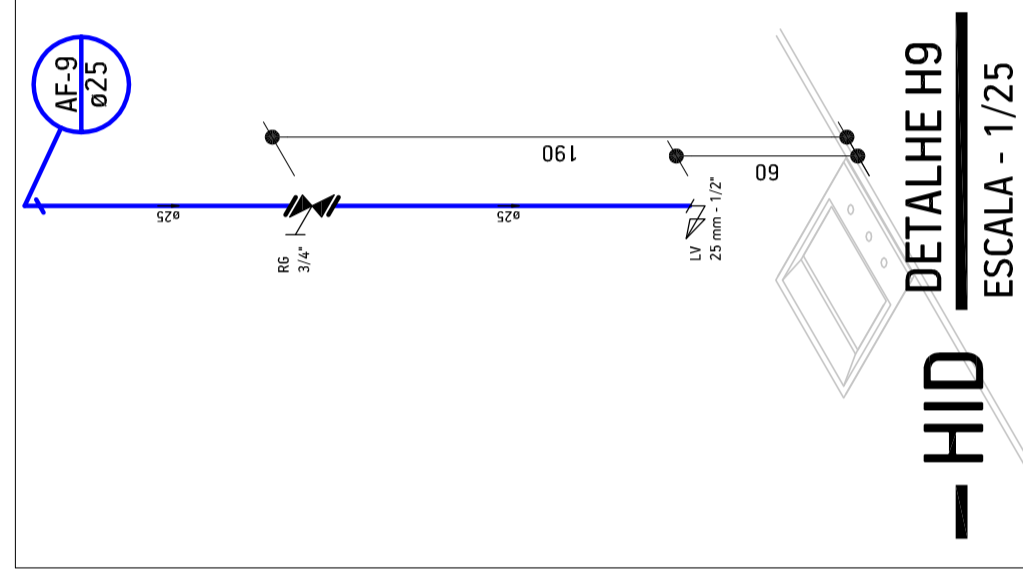
**— HID** **DETALHE H6**  
ESCALA - 1/25



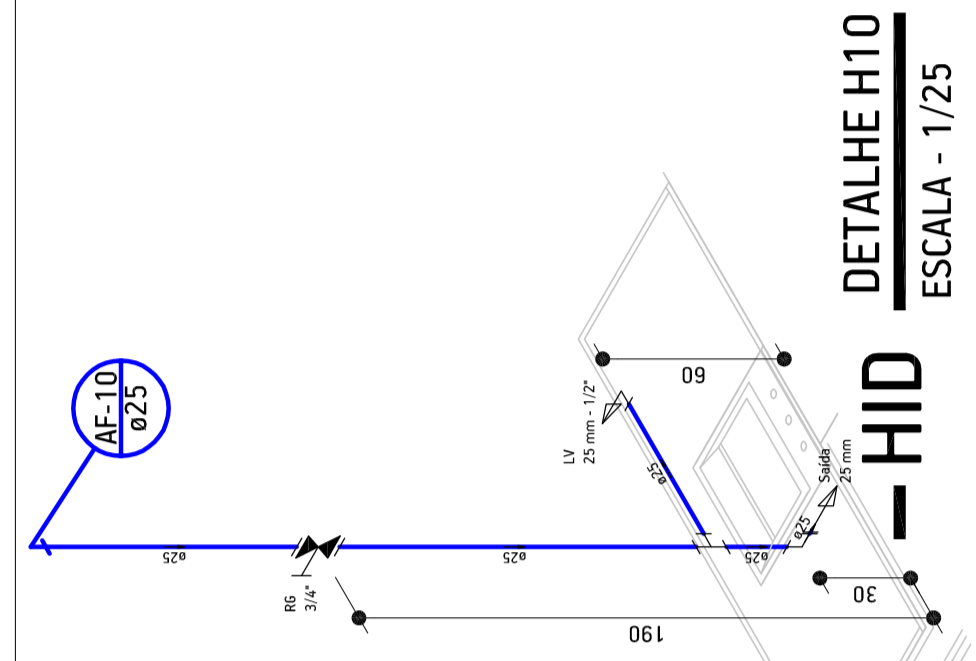
**— HID** **DETALHE H7**  
ESCALA - 1/25



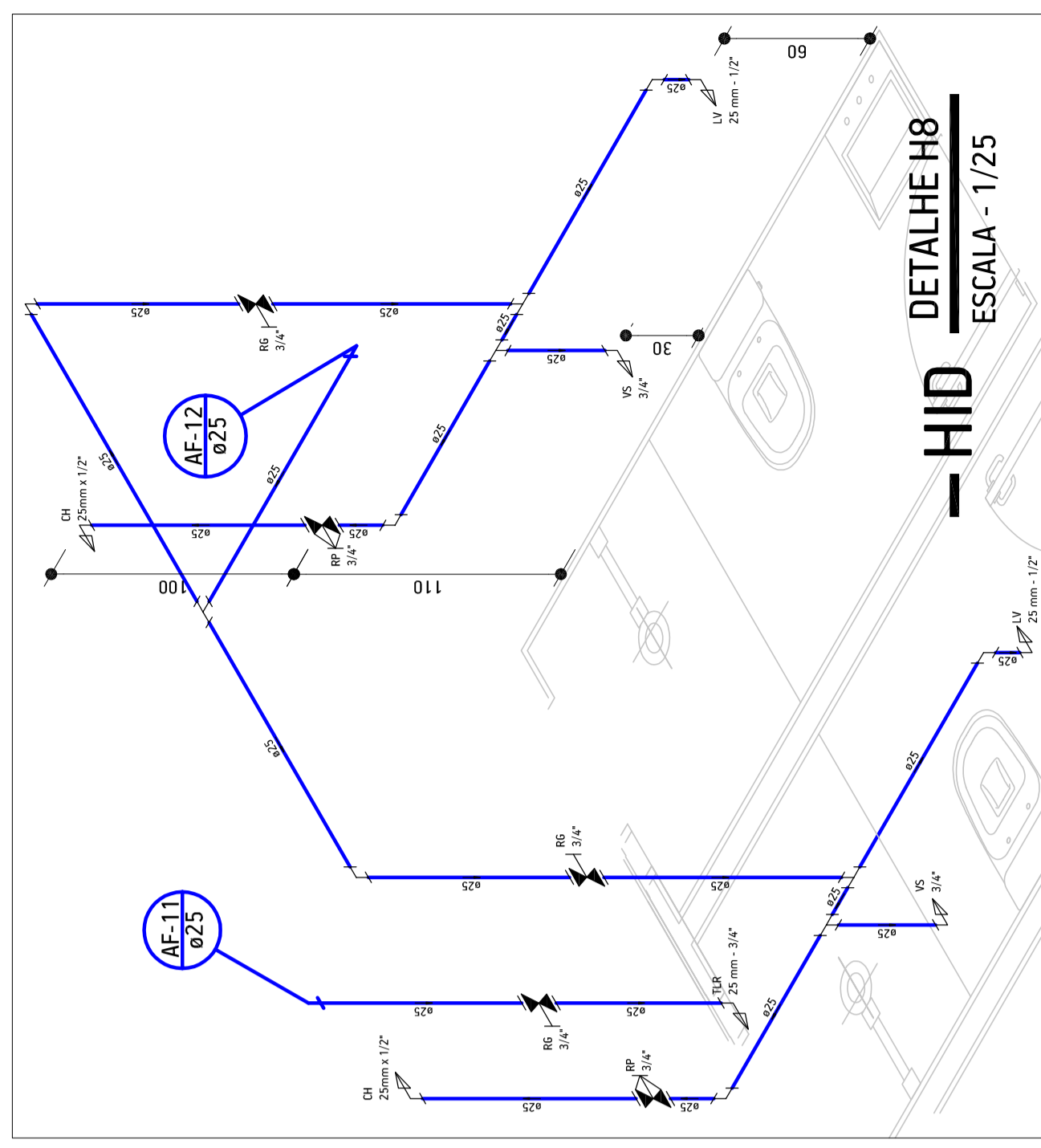
**— HID** **DETALHE H8**  
ESCALA - 1/25



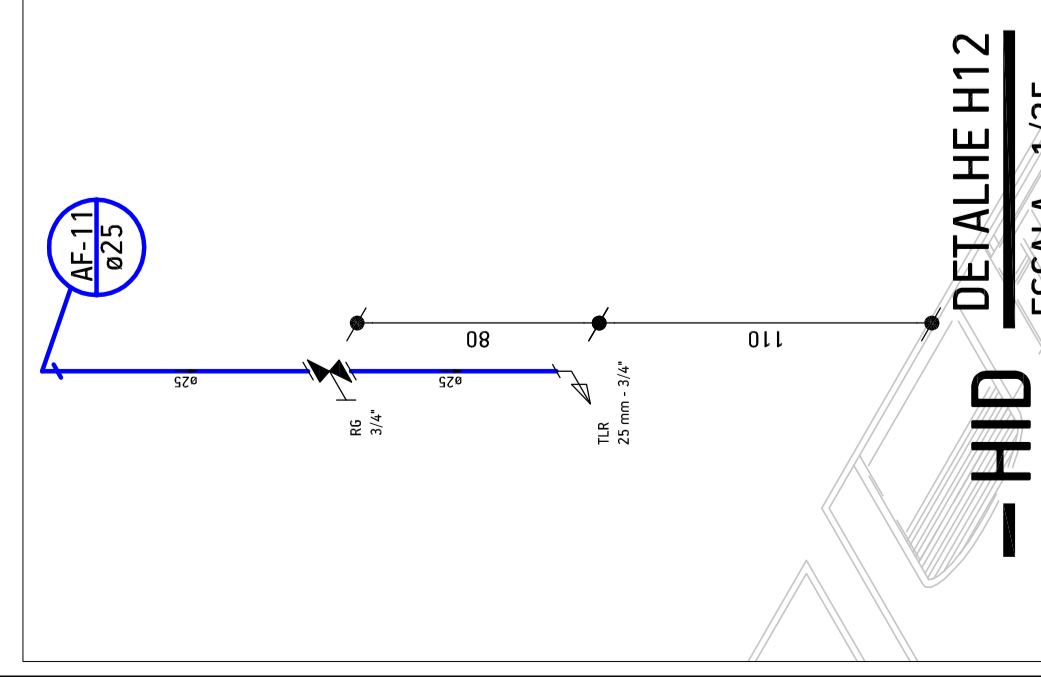
**— HID** **DETALHE H9**  
ESCALA - 1/25



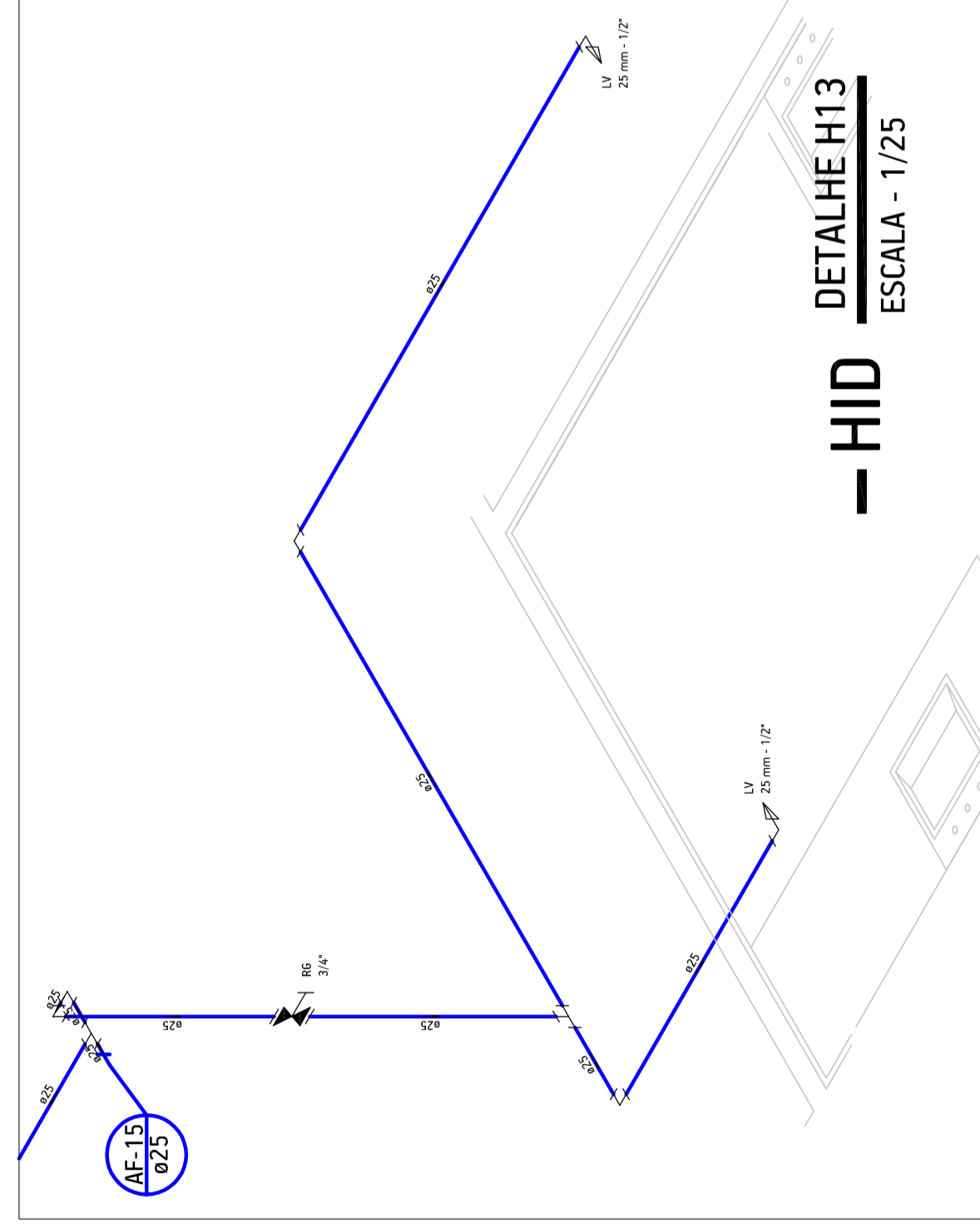
**— HID** **DETALHE H10**  
ESCALA - 1/25



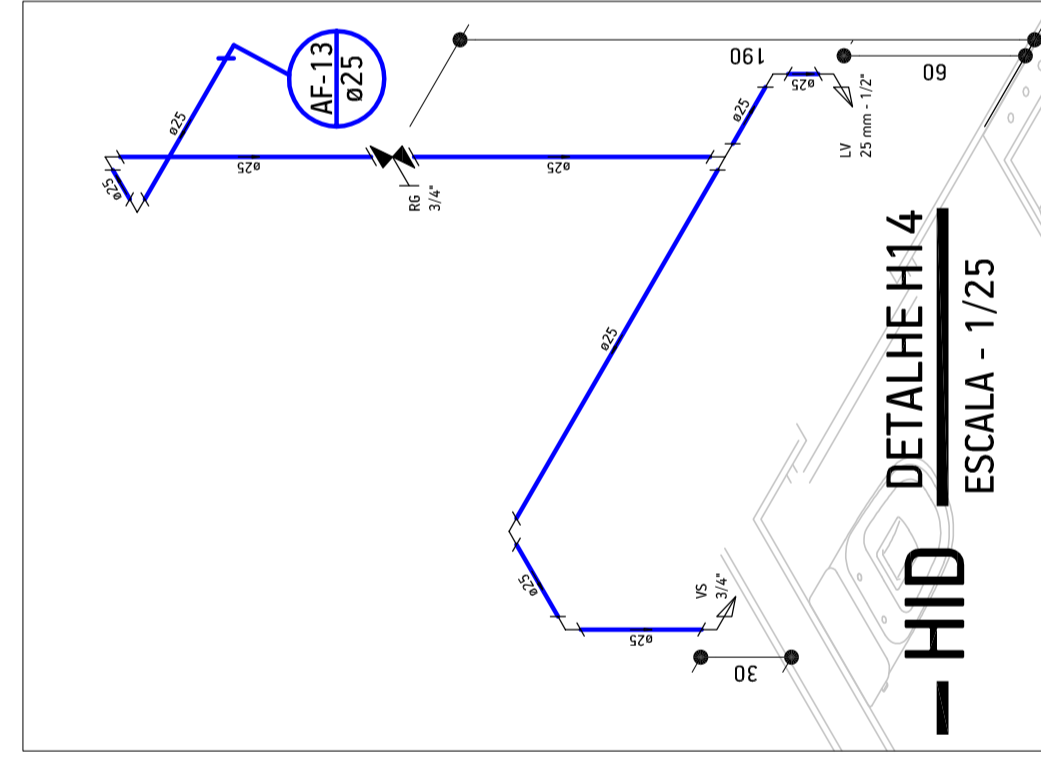
**— HID** **DETALHE H8**  
ESCALA - 1/25



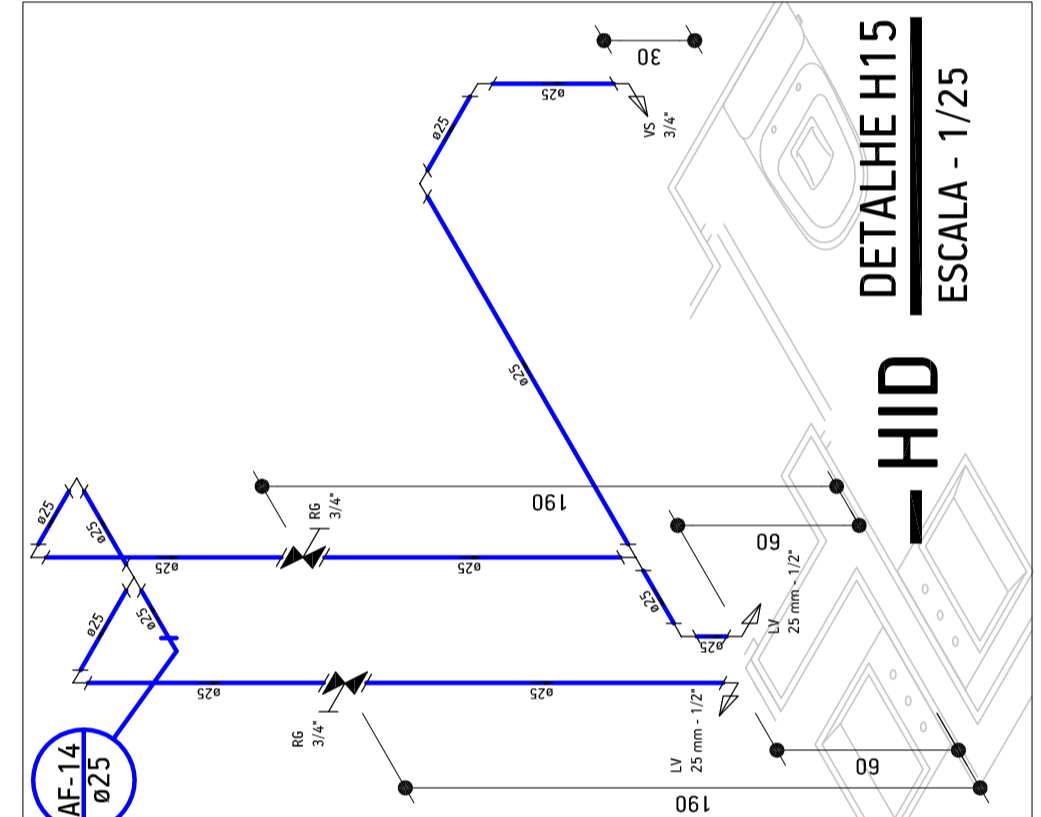
**— HID** **DETALHE H12**  
ESCALA - 1/25



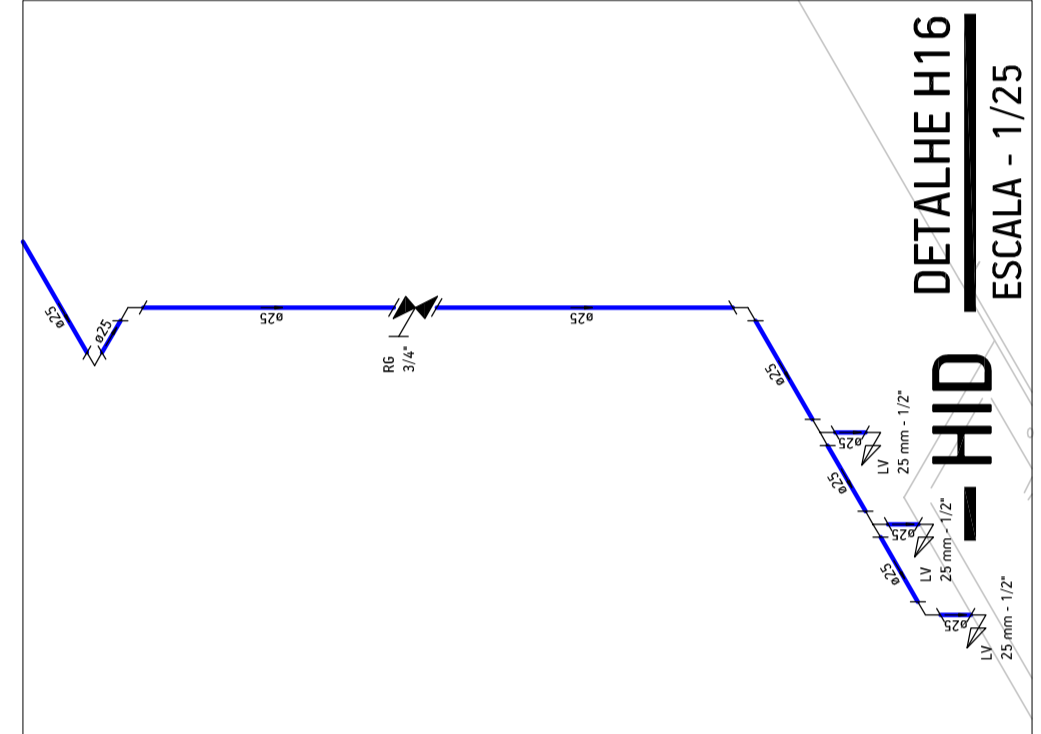
**— HID** **DETALHE H13**  
ESCALA - 1/25



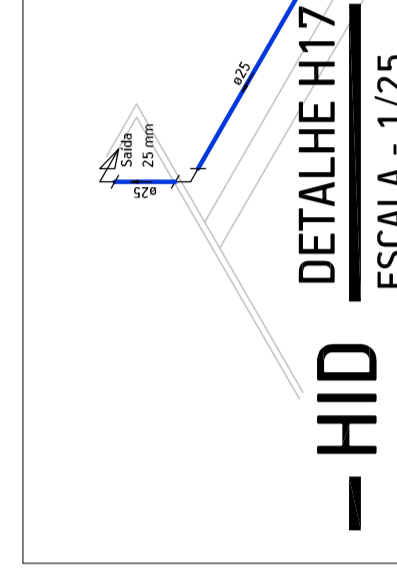
**— HID** **DETALHE H14**  
ESCALA - 1/25



**— HID** **DETALHE H15**  
ESCALA - 1/25



**— HID** **DETALHE H16**  
ESCALA - 1/25



**— HID** **DETALHE H17**  
ESCALA - 1/25



OBRA:	PARCELA 03	PROJETO:	HIDRÁULICO-HID-SANITÁRIO
ENDEREÇO:	RUA RENALDO SARGELOTTO, QUADRA 29, PARTE DOS LOTES 06 E 07 - CENTRO - SERTÃO/S	RESPONSÁVEL TÉCNICO:	
PREFEITURA MUNICIPAL DE SERTÃO			
DISPOSIÇÕES DE ENGENHARIA			
DESCRIÇÃO:	DETALHES PAVIMENTO TÊRREO		
ÁREA TERRENO:	7.500,00 m²	ÁREA CONSTRUIDA:	394,41 m²
CÓDIGO:	1719	REVISÃO:	R00
		DATA:	DEZ/2017
			PARCELA 03
			HID 02

OBSERVAÇÕES: Direitos autorais reservados conforme artigo 184 do código penal, Lei 5988 de código civil, artigo 209/71  
 Engenheiro Responsável: Edson Roberto  
 INSCRIÇÃO Nº: 174542  
 54.9168.5883  
 54.9880.3656